

Table of Contents

- Offline Map Tutorial** 2
- Introduction** 2
- Automatic download and installation** 2
- Download sources 2
- Download and install the maps/themes 2
- Check on updates for downloaded maps 6
- Usage** 7
- Selecting map files 7
- Selecting a theme 9
- Advanced theme options 10
- Further reading on offline maps** 12

Offline Map Tutorial

Introduction

c:geo supports [Openstreetmap](#) based offline vector map files using the [mapsforge](#) format.

Using an offline map with c:geo in combination with stored caches allows to use c:geo completely offline (e.g. when you don't want or cannot use a mobile data connection).

In addition to offline map files c:geo also supports related map themes. By using a custom map theme in combination with an offline map, you can customize the map view according to your needs (e.g. height lines, hiking trail marking, and much more). Some offline maps even require a matching theme to be installed to be displayed correctly.

This tutorial describes how to download, install and configure such offline maps and themes.

Automatic download and installation

c:geo supports a fully automated download and installation of offline maps from various sources.

Download sources

The following tables provides an overview of map file sources, which are supported by the c:geo map downloader:

Name	Coverage	Description	Remarks	Pricing
Mapsforge Map Repository	World	This server hosts worldwide pre-built maps and POIs generated with the latest version of the mapsforge-writer plugins.	Custom theme files are not offered, the map files work best when using the c:geo default theme.	Free to use
OpenAndroMaps	World	OpenAndroMaps offers downloadable vector maps for smartphones for free	We recommended to use theses maps together with the matching OpenAndroMaps map theme "Elevate4" which is offered to be downloaded by our map downloader automatically after downloading a map.	Free to use, Donation appreciated
Freizeitkarte OSM	Europe	Map files for Garmin devices and android smartphones.	Very detailed maps, but requires the corresponding theme (will be offered to download automatically by our map downloader) to have a correct view.	Free to use, Donation appreciated

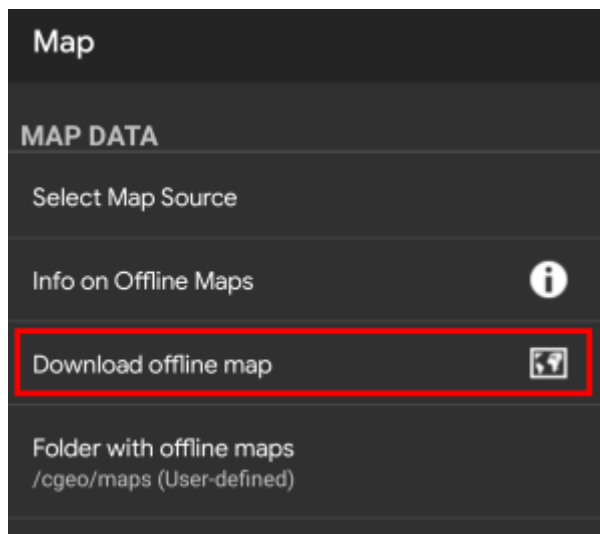
Download and install the maps/themes

The c:geo map downloader can be started in two ways:

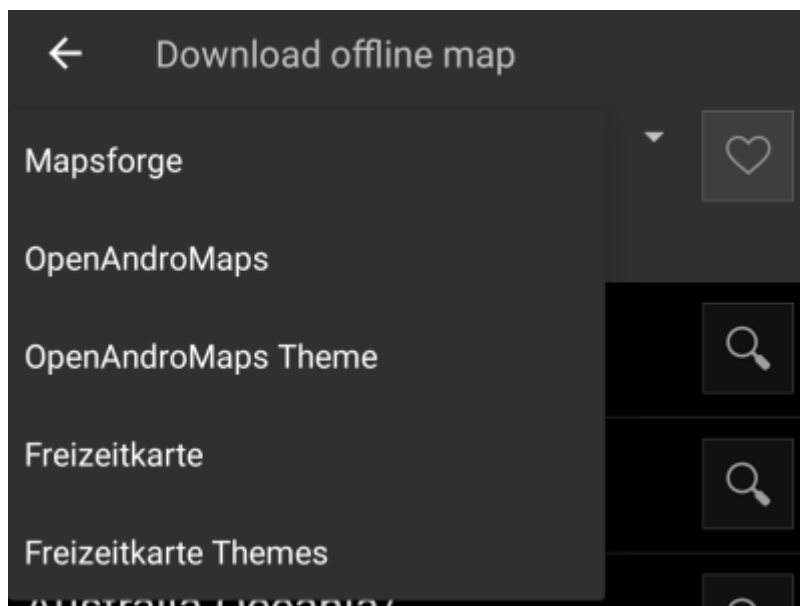
- From the [map view](#) by opening the map selector and tapping on <Download offline map>



- From the [map settings](#) by selecting Download offline map



After opening the map downloader you can choose from what source you would like to download the map by opening the drop down menu shown on top. To learn more about the different map sources, please take a look at [this list](#) or click on the heart icon shown on top right in the map downloader.



For this example we use “Mapsforge” as map source and want to download the offline map for Mexico.

The top level list is usually sorted by coarse geographical regions (typically: continents) and get more specific on each lower level. Click on the magnifier icon to open the desired list/region and see its contents. If you finally found the map file you want to install, simply click on the disc icon next to it to start the download process.

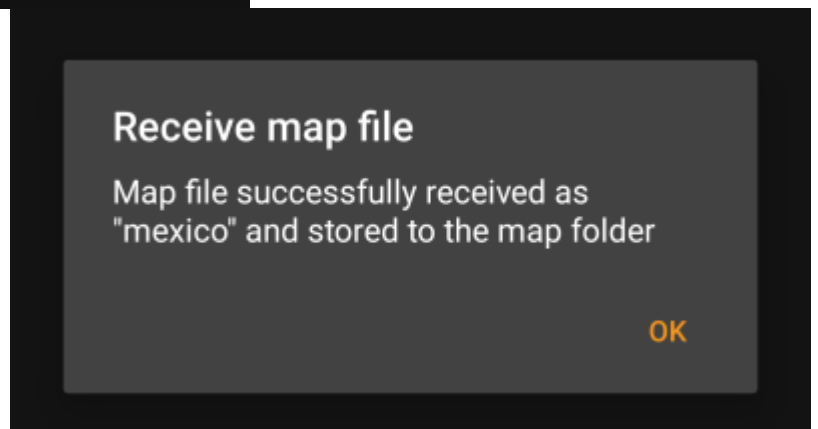


 Downloading a map can cause high network traffic! Make sure you use a Wifi or other non-metered network before starting the download.

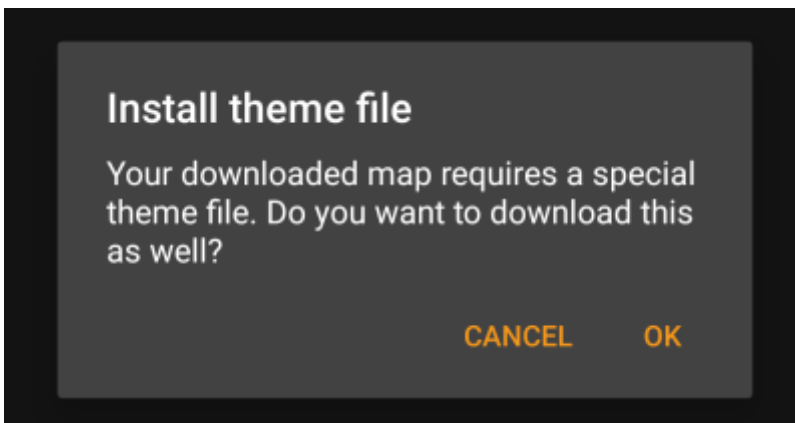
Confirm the following dialog to start the download.



The download itself is performed in the background by the download manager of your device. When the transfer is complete, the file is copied to the c:geo map folder and set as current map automatically.



If the downloaded map requires a dedicated map theme (does not apply to Mapsforge) the downloader will afterwards automatically ask you, whether you also want to download and install the needed theme.



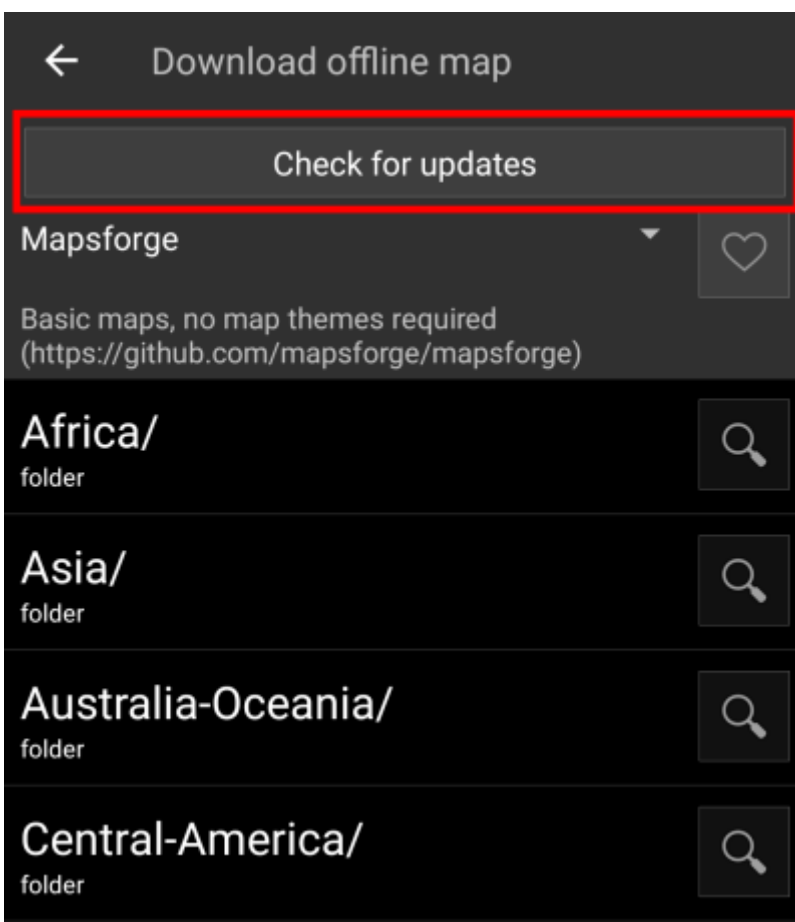
This is all you need to do. The downloaded map (and optionally the downloaded theme) will automatically be selected to be used for your map view.

In case you need more than one offline map you can repeat the process as needed.

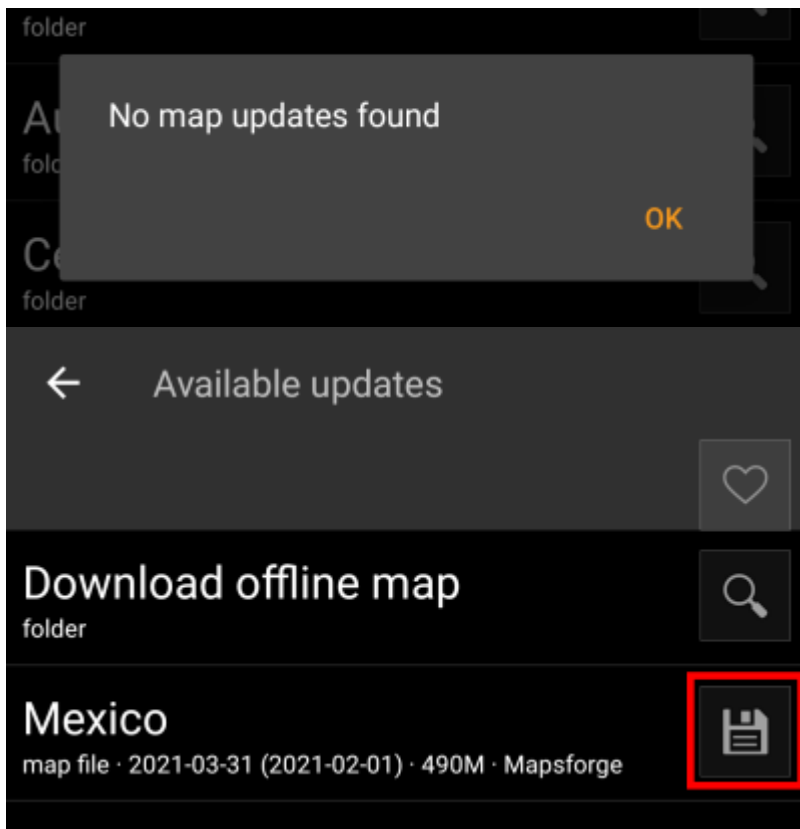
Check on updates for downloaded maps

You can also use the map downloader to check for regular updates of your already downloaded maps and themes. Just open the map downloader as described in the chapter above.

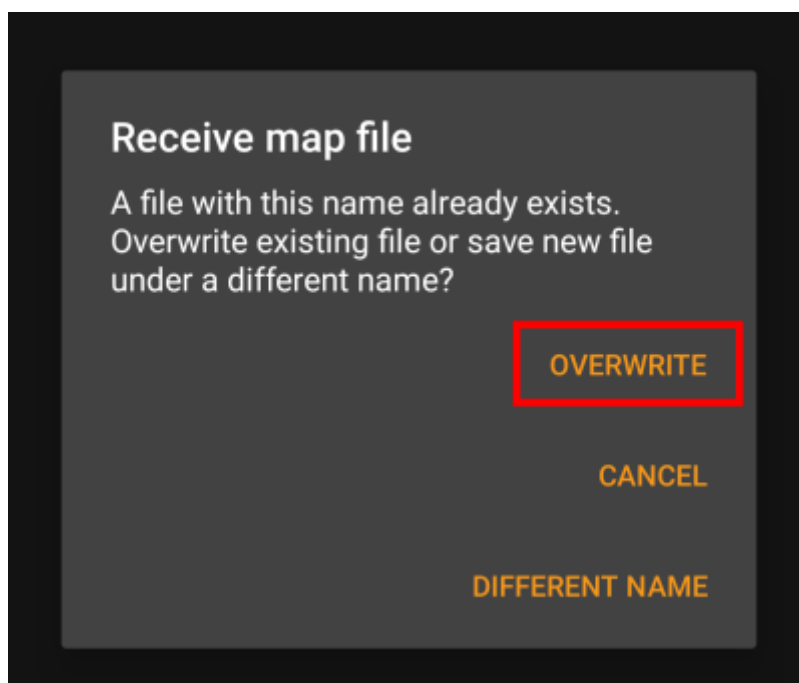
Tap on the button Check for updates to let the downloader automatically check, whether there are any newer versions of your downloaded maps and themes available.



The downloader will either show you, that no map update is available or list the files, which can be updated. To update the maps/themes just click the disc icon next to the file name.



Once the update has been downloaded you will be asked, whether you want to overwrite the existing (older) map or rename the downloaded map. Usually you may want to replace the old map, therefore you should select Overwrite.

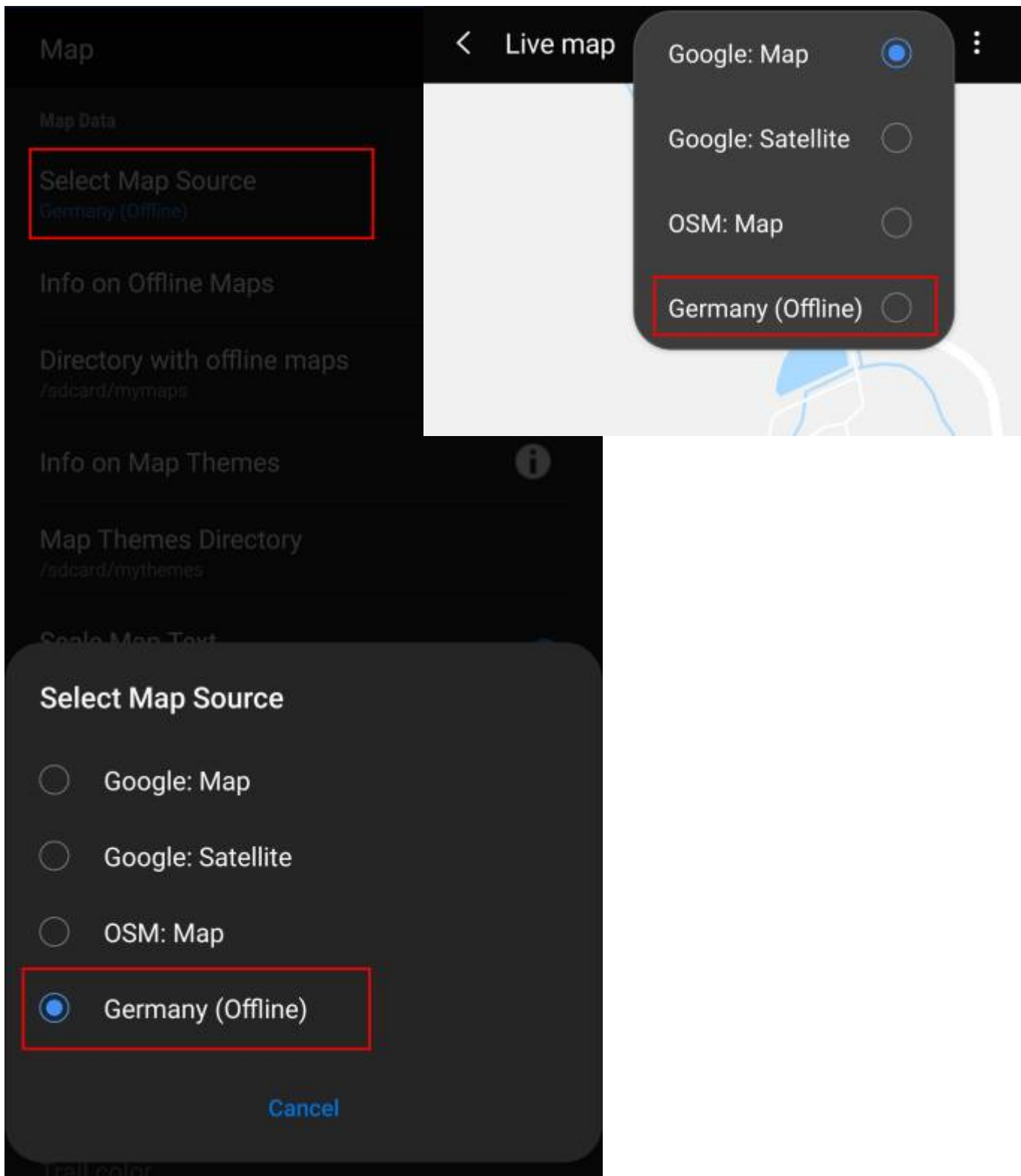


Usage

Selecting map files

c:geo will show all downloaded offline map files in the map selection menu on your (live) map and in c:geo Menu

→ Settings → Map.

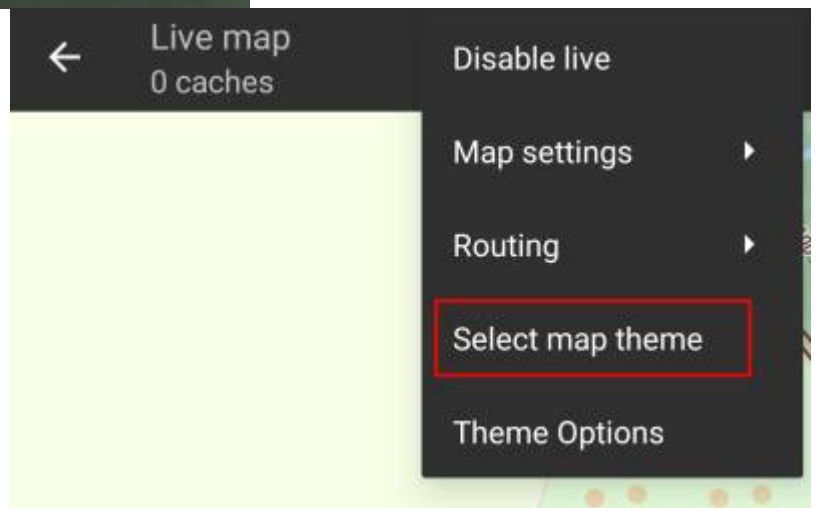


Once selected c:geo will continuously use this map file to render your map instead of using the online maps.

Selecting a theme

After selecting the offline map file to be used, you can assign the theme, which shall be used to render the map.

This can be done in the menu of the (live) map using the menu option `Select map theme`. If you installed a theme alongside with your offline map, please make sure you select the corresponding theme here.



Advanced theme options

If you installed a theme, you can adjust and configure the visibility of certain map elements according to your need. You can find the related option in the (live) map menu under Theme Options.



Here you can select a basic map style (e.g. Hiking, Cycling, Car) and customize it afterwards by enabling/disabling additional elements of the map.



Further reading on offline maps

Link to some guides and tutorials made by c:geo users

Link	Language	Description
Saarfuchs Blog	German	Tutorial about c:geo and offline usage